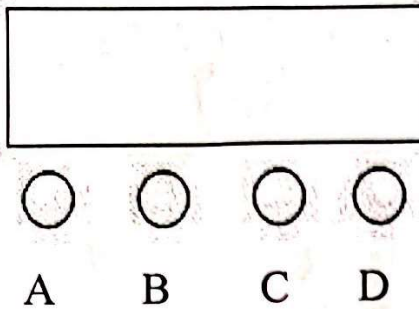


24PCS RGB 3IN1 LED Wall Washer Light Instructions

1.The illustration part:



- A.Function key
- B.Additional key
- C.Reduction key
- D.OK key

Instructions: according to the function keys can cycle out several different functional effect, A digital tube in the first two digits represent the current function (see menu). After the two digits represent the function of. Address code. Or speed, parameters. Press B or C can modify the parameter values. Press the D key to confirm.

2. The LED display window function, (all function according to the selection and then press the D key to save)

Display	Function Description
A001	Eight channel address code, (001—512) B, C key to add and subtract address code values
ADYE	back to dmx 512 address
FF00	auto mode with speed adjustment (00-99)
AU01	color selection
EE00	color fade with speed adjustment (00-99)
CC00	color pulse with speed adjustment (00-99)
F000	strobe from slow to fast (000-255)
SOUD	strobe by sound
SUND	color change by sound
R000	Red dimmer(000-255)
G000	Green dimmer(000-255)
B000	Blue dimmer(000-255)

3. DMX512 channel show

No.	Function	Description
Channel 1	Tuned light	R, G, B tuned light, linear light changes, from dark to bright
Channel 2	R light-dimmer	R That move light, linear light changes, from dark to bright
Channel 3	G light-dimmer	G That move light, linear light changes, from dark to bright
Channel 4	B light-dimmer	B That move light, linear light changes, from dark to bright
Channel 5	Total stroboscopic	R, G, B total strobe, from slow to fast
Channel 6	Function Selection	Color Macros
Channel 7	Function of speed	Function of speed, from slow to fast

4. functional characteristics:

Operation is very simple, humanized design, dimming flicker-free, dithering phenomenon, etc. Can adapt to photography, photography, television, etc Strict in lighting occasions